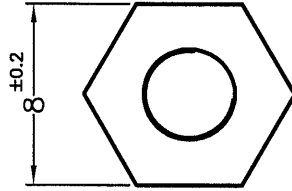
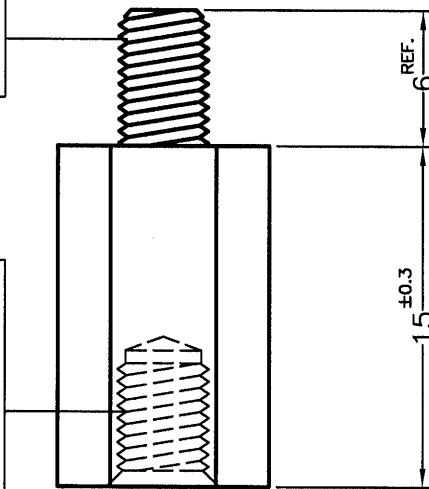


REVISIONS			
REV	DESCRIPTION	DATE	BY




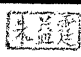
M4X0.7P  
 INSERT MOLDING  
 埋入射出  
 MATERIAL : STEEL /PLATED NI  
 材質:鐵 / 電鍍鎳

M4X0.7P  
 INSERT MOLDING  
 埋入射出  
 EFFECTIVE FASTEN LENGTH :5mm<sup>REF.</sup>  
 有效牙深:5mm<sup>REF.</sup>  
 MATERIAL : STEEL /PLATED NI  
 材質:鐵 / 電鍍鎳



符合歐盟ROHS規範 (RoHS Compliant)	
★鉛Pb	<1000PPM
★鎘Cd	< 100PPM
★汞Hg	<1000PPM
★六價鉻Cr6+	<1000PPM
★多溴聯苯類PBBs	<1000PPM
★多溴聯苯醚類PBDEs	<1000PPM

NOTE:MADE OF EQUIVALENT MATERIAL.  
 可使用同等材質.

 康揚企業股份有限公司 KANG YANG HARDWARE ENTERPRISE CO., LTD. 康揚塑膠(東莞)有限公司 KANG YANG PLASTIC(DONG GUAN )CO.,LTD. 康哲電腦配件(吳江)有限公司 KANG CHE COMPUTER COMPONENTS(WUJIANG) CO.,LTD.				TITLE	THREADED SPACER	SPEC. DWG.
				MATERIAL	NYLON 66 UL94V-0+GF	DATE
PART NUMBER		DRAWING NUMBER		NUT'S MATERIAL	NUT'S FINISH	DRAWN
MTPA4-15-1VG		MTPA4-15-1VG		STEEL	NICKEL PLATED	T.C
SIZE	SCALE	UNIT	REV	COLOR	CHECK	
A4	3:1	mm	A	NATURAL		
UNLESS OTHERWISE SPECIFIED TOLERANCE				SEE ABOVE	APPROVED	
					