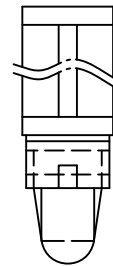


P.C.B  $\phi 4.8$   
THICKNESS 0.8~2.0



PART NO.	A
LAS-3	3.5
LAS-5	4.8
LAS-6	6.0
LAS-6A	6.4
LAS-8	7.9
LAS-9	9.5
LAS-11	11.1
LAS-12	12.7
LAS-16	15.9

PART NO.	A
LAS-19	19.1
LAS-22	22.2
LAS-24	24.0
LAS-25	25.4
LAS-27.5	27.5
LAS-28	28.6
LAS-31.1	31.1
LAS-31.7	31.7
LAS-35	34.9

NOTE:D